

WHITE RIVER

1648 MVX JON

\$3,995*

SPECIFICATIONS

Length	16' 1"
Beam72"
Bottom width48"
Max. recommended HP	40 HP
Max. person capacity	4 persons
Max. person weight	555 lbs.
Max. weight capacity	1055 lbs.
Interior depth16"
Transom height21"
Deadrise	7 degrees
Hull material0100 5052 marine alloy
Approx. weight	587 lbs.
Approx. package weight	1209 lbs.

STANDARD FEATURES

COMFORT, CONVENIENCE & PEACE OF MIND

- 5-year hull warranty
- NMMA® certified
- Flotation meets or exceeds NMMA® & U.S. Coast Guard requirements
- Bow & stern eyes
- 4 tie-off cleats

CONSTRUCTION & EXTERIOR

- 100% aluminum, wood-free construction
- Thick .190 aluminum floor for added rigidity & a quieter ride
- 7° deadrise for a smoother, drier ride
- Welded-in, foam-filled interior side walls for quieter ride & structural strength
- Heavy-duty 1-piece, extruded aluminum gunnels for structural strength & rigidity
- Extruded bow chines for a stronger hull
- .100 5052 marine grade aluminum hull
- All-aluminum box-beam transom w/ corner braces—welded in to unitize & strengthen the hull

- Welded-in longitudinal stringer system for full-length support of the running surface
- Pressed-in strakes for structural strength & tracking stability
- Industry-exclusive, baked-on powder-coat finish (Forest Green) w/Sure Tread™ for long-lasting durability, color & good looks
- Available in optional Grassland or Woodland camo patterns (at additional cost)

FUNCTIONAL

- VERSATRACK® accessory-mounting channel in gunnels
- Trolling motor mounting surface along bow edge

INTERIOR

- Roomy front deck w/more space for fishing/hunting
- Bow & aft pedestal seat base locations
- Bow storage
- Sure Tread™ non-skid interior
- Grab handles

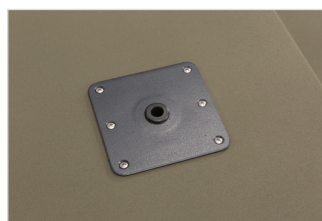
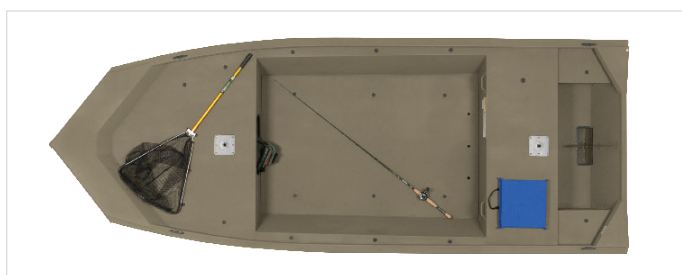
OPTIONAL FEATURES

TRAILER

- 14' (4.9 m) single-axle, custom-matched trailer \$1,295*



Photographs may be shown with optional equipment and/or aftermarket accessories.



Bow & aft pedestal seat bases



VERSATRACK® accessory-mounting channels



All-aluminum transom



Grab handles

*Actual dealer price may vary. See your authorized White River Jon Boat dealer for more details including tax, title prep and destination charges. All prices shown in U.S. Dollars.